



SNAPSHOT

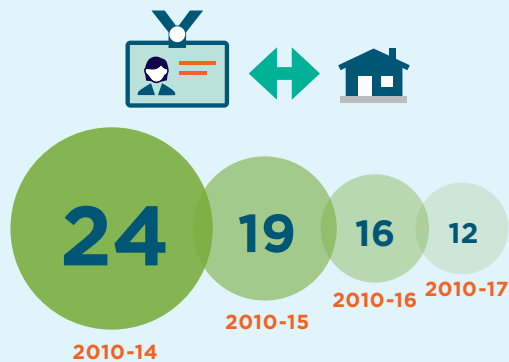
June 2016 - June 2019

THE CHALLENGE

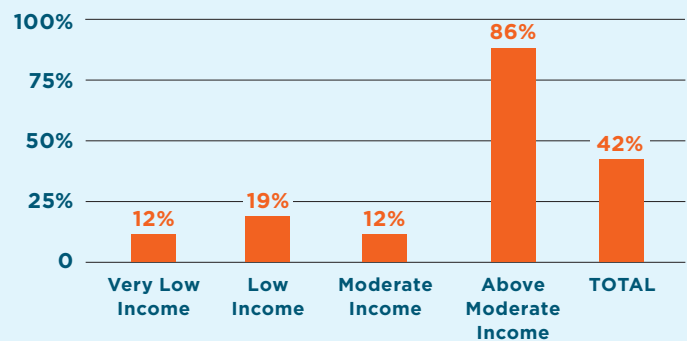
Situated between San Francisco and Santa Clara counties, San Mateo County includes 20 incorporated cities over 455 square land miles, a median home value of \$1.4 million (in March 2017), and a median household income of \$116,653 (2017). The County's open space and agricultural uses account for approximately 75% of the landscape, and approximately two-thirds of residences in the County are single family homes.

From 2010-2017, San Mateo County added 83,000 new jobs and just over 7,000 new housing units. This 12-to-1 jobs/housing gap leads to housing cost inflation, longer commutes, additional congestion, displacement of middle and lower income families, and employee recruitment challenges for businesses. The gap is decreasing, but we still have a long way to go.

DECREASING JOBS/HOUSING GAP



PERCENT OF COUNTYWIDE HOUSING REQUIREMENT ACHIEVED IN 2015-17*



**Required under CA Regional Housing Needs Allocation (RHNA) for 2015-23*

Home for All is a collaboration of local governments, businesses, schools, advocates, developers, and not-for-profit organizations working to increase local housing production and preservation so that persons of all ages, backgrounds, and income levels have the opportunity to call San Mateo County home. First convened in 2016, the program is administratively supported and funded by the County of San Mateo.

PROGRESS



BUILDING PARTNERSHIPS & COMMUNITY SUPPORT

- Community Engagement Program active in nine cities
- Community educational convenings and workshops
- Home for All resolutions
- Community Partner Forums
- Home for All website
- Second Unit Inspiration Book, Workbook, and online Second Unit Resources Center
- Collaboration with non-governmental partners, including philanthropy and the tech sector



SECURING LAND & STRENGTHENING COMMUNITY INFRASTRUCTURE

- Analysis of available public land
- Transit-oriented development best practices
- Parking and traffic data and case studies



SUPPORTING ALL TYPES OF HOUSING DEVELOPMENT

- 14 key housing policies created or updated in San Mateo County to advance all types of housing
- Specialized workshops
- Technical assistance
- 7,529 permits issued across all income levels in San Mateo County in 2014-17
- 263 second unit permits issued in 2017 in San Mateo County (compared to 53 in 2014)



FUNDING AFFORDABLE HOUSING

- County Affordable Housing Fund – \$110 million in 2012-19, leveraging nearly \$1 billion in additional funding
- Support for HEART, our local housing endowment and community land trust – \$5 million in seed funding for its revolving loan fund
- Local affordable housing fund policies adopted by 16 cities

AFFORDABLE HOUSING FUND JULY 2012-JUNE 2019

